



Test Report

Report No. A22204388871010201

Page 1 of 7

Company Name CWB ELECTRONICS (ZHEJIANG) CO.,LTD.
shown on Report
Address 1098,XINGFU ROAD (EAST),CWB INDUSTRIAL
ZONE,HONGQIAO,YUEQING,ZHEJIANG

The following sample(s) and sample information was/were submitted and identified by/on the behalf of the applicant

Sample Name(s) Terminal
Material Bronze Strip
Part No. Bronze Strip
Sample Received Date Sep. 23, 2022
Testing Period Sep. 29, 2022 to Oct. 8, 2022
Test Requested As specified by client, to test Lead (Pb), Cadmium (Cd), Mercury (Hg), Hexavalent Chromium (Cr(VI)), Polybrominated Biphenyls (PBBs), Polybrominated Diphenyl Ethers (PBDEs), Phthalates (DBP, BBP, DEHP, DIBP) in the submitted sample(s).
Test Method/Test Result(s) Please refer to the following page(s).

Conclusion

Tested Sample	According to standard/directive	Result
Submitted Sample	RoHS Directive 2011/65/EU with amendment (EU) 2015/863	PASS

PASS means that the results shown on the report comply with the limits set by RoHS Directive 2011/65/EU with amendment (EU) 2015/863.

Tested by

Arnold Lin

Reviewed by

Anso Fang

Approved by

Hill Zheng

Date

Oct. 8, 2022

Hill Zheng
Technical Manager

No. R262625788



Centre Testing International Group Co.,Ltd.

Inspection & Testing Services
CTI Building, Xing Dong Community, Xin'an Sub-district, Bao'an District, Shenzhen City, Guangdong Province, P.R. China

Test Report

Report No. A22204388871010201

Page 2 of 7

Test Method

Tested Item(s)	Test Method	Measured Equipment(s)
Lead (Pb) #	IEC 62321-5:2013	ICP-OES
	Refer to IEC 62321-5:2013	
Cadmium (Cd) #	IEC 62321-5:2013	ICP-OES
	Refer to IEC 62321-5:2013	
Mercury (Hg) #	IEC 62321-4:2013+AMD1:2017 CSV	ICP-OES
	Refer to IEC 62321-4:2013+AMD1:2017 CSV	
Hexavalent Chromium (Cr(VI)) #	IEC 62321-7-1:2015	UV-Vis
Polybrominated Biphenyls (PBBs) *	IEC 62321-6:2015	GC-MS
Polybrominated Diphenyl Ethers (PBDEs) *	IEC 62321-6:2015	GC-MS
Phthalates (DBP, BBP, DEHP, DIBP) *	IEC 62321-8:2017	GC-MS

Test Report

Report No. A22204388871010201

Page 3 of 7

Test Result(s)

Tested Item(s)	Result		MDL	Limit
	001	002		
Lead (Pb) #	11 mg/kg	39 mg/kg	2 mg/kg	1000 mg/kg
Cadmium (Cd) #	N.D.	N.D.	2 mg/kg	100 mg/kg
Mercury (Hg) #	N.D.	N.D.	2 mg/kg	1000 mg/kg
Hexavalent Chromium (Cr(VI)) #	N.D. ▼	N.D. ▼	0.10 µg/cm ² (LOQ)	1000 mg/kg

Tested Item(s)	Result		MDL	Limit
	001	002		
Polybrominated Biphenyls (PBBs) *				
Monobromobiphenyl	N.D.	N.D.	5 mg/kg	1000 mg/kg
Dibromobiphenyl	N.D.	N.D.	5 mg/kg	
Tribromobiphenyl	N.D.	N.D.	5 mg/kg	
Tetrabromobiphenyl	N.D.	N.D.	5 mg/kg	
Pentabromobiphenyl	N.D.	N.D.	5 mg/kg	
Hexabromobiphenyl	N.D.	N.D.	5 mg/kg	
Heptabromobiphenyl	N.D.	N.D.	5 mg/kg	
Octabromobiphenyl	N.D.	N.D.	5 mg/kg	
Nonabromobiphenyl	N.D.	N.D.	5 mg/kg	
Decabromobiphenyl	N.D.	N.D.	5 mg/kg	

Tested Item(s)	Result		MDL	Limit
	001	002		
Polybrominated Diphenyl Ethers (PBDEs) *				
Monobromodiphenyl ether	N.D.	N.D.	5 mg/kg	1000 mg/kg
Dibromodiphenyl ether	N.D.	N.D.	5 mg/kg	
Tribromodiphenyl ether	N.D.	N.D.	5 mg/kg	
Tetrabromodiphenyl ether	N.D.	N.D.	5 mg/kg	
Pentabromodiphenyl ether	N.D.	N.D.	5 mg/kg	
Hexabromodiphenyl ether	N.D.	N.D.	5 mg/kg	
Heptabromodiphenyl ether	N.D.	N.D.	5 mg/kg	
Octabromodiphenyl ether	N.D.	N.D.	5 mg/kg	
Nonabromodiphenyl ether	N.D.	N.D.	5 mg/kg	
Decabromodiphenyl ether	N.D.	N.D.	5 mg/kg	

Test Report

Report No. A22204388871010201

Page 4 of 7

Tested Item(s)	Result		MDL	Limit
	001	002		
Phthalates (DBP, BBP, DEHP, DIBP) *				
Dibutyl phthalate (DBP) CAS#:84-74-2	N.D.	N.D.	50 mg/kg	1000 mg/kg
Butyl benzyl phthalate (BBP) CAS#:85-68-7	N.D.	N.D.	50 mg/kg	1000 mg/kg
Di-(2-ethylhexyl) phthalate (DEHP) CAS#:117-81-7	N.D.	N.D.	50 mg/kg	1000 mg/kg
Diisobutyl phthalate (DIBP) CAS#:84-69-5	N.D.	N.D.	50 mg/kg	1000 mg/kg

Sample/Part Description

001 Metal base
002 Silver-white plating

Remark: The sample(s) had been dissolved totally tested for Lead, Cadmium, Mercury.

-MDL = Method Detection Limit

-N.D. = Not Detected (<MDL or LOQ)

-mg/kg = ppm = parts per million

-1000 mg/kg = 0.1%

-LOQ = Limit of Quantification, The LOQ of Hexavalent chromium is 0.10 $\mu\text{g}/\text{cm}^2$

-▼The sample is negative for Cr(VI) – The Cr(VI) concentration is below 0.10 $\mu\text{g}/\text{cm}^2$. The coating is considered a non-Cr(VI) based coating.

-#=The test result(s) is/are presented in reference to the result(s) that reported in A222042772210202E.

Note: -*indicates the item(s)/method(s) is (are) not in CNAS accreditation scope.

Test Report

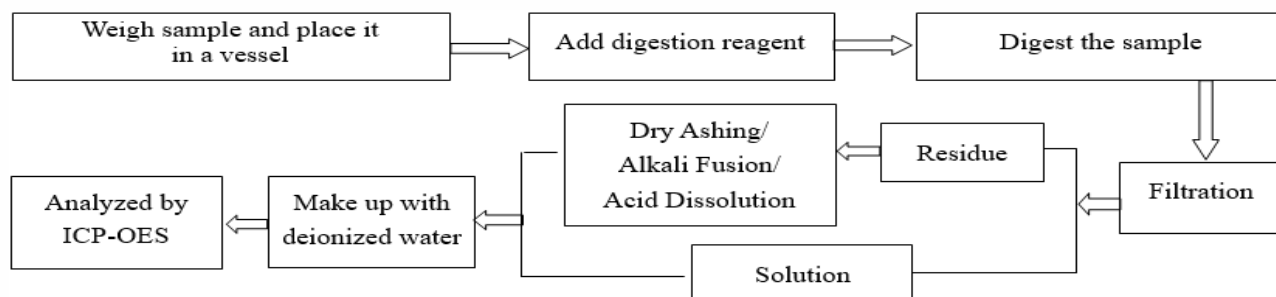
Report No. A22204388871010201

Page 5 of 7

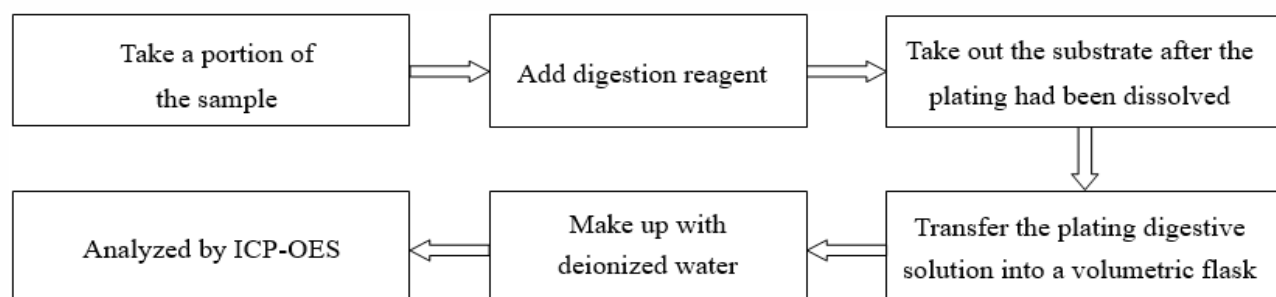
Test Process

1. Lead (Pb), Cadmium (Cd)

(1) IEC 62321-5:2013

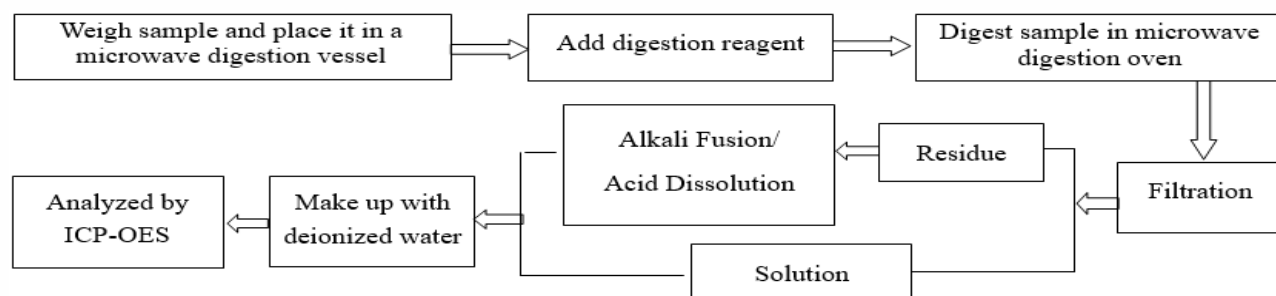


(2) Refer to IEC 62321-5:2013

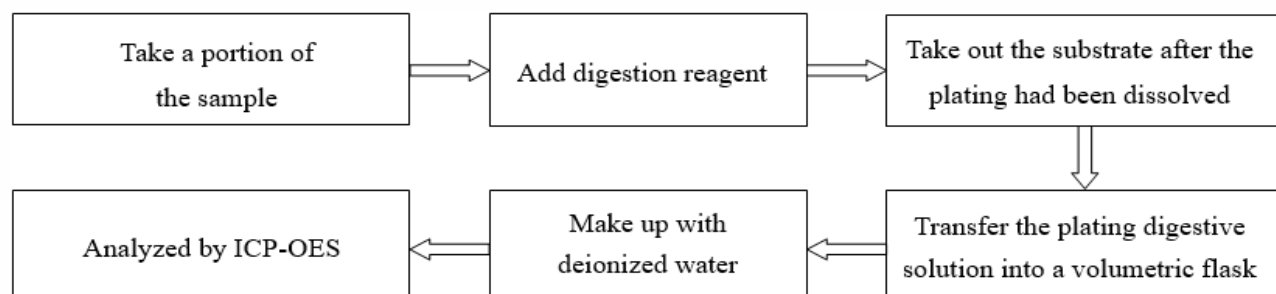


2. Mercury (Hg)

(1) IEC 62321-4:2013+AMD1:2017 CSV



(2) Refer to IEC 62321-4:2013+AMD1:2017 CSV

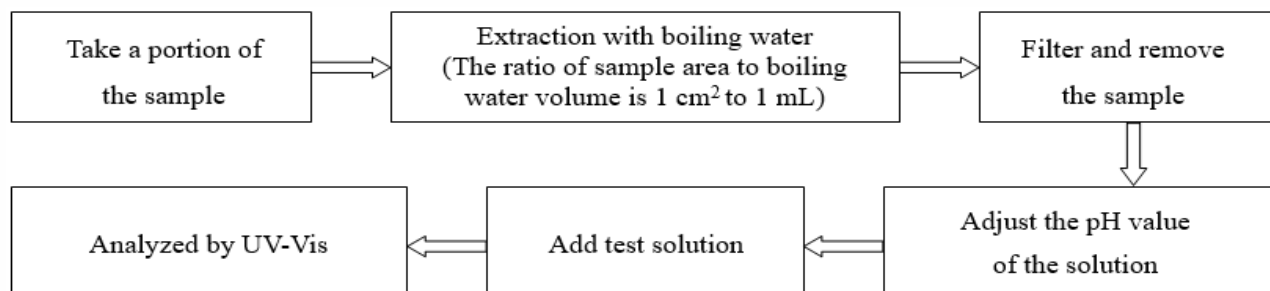


Test Report

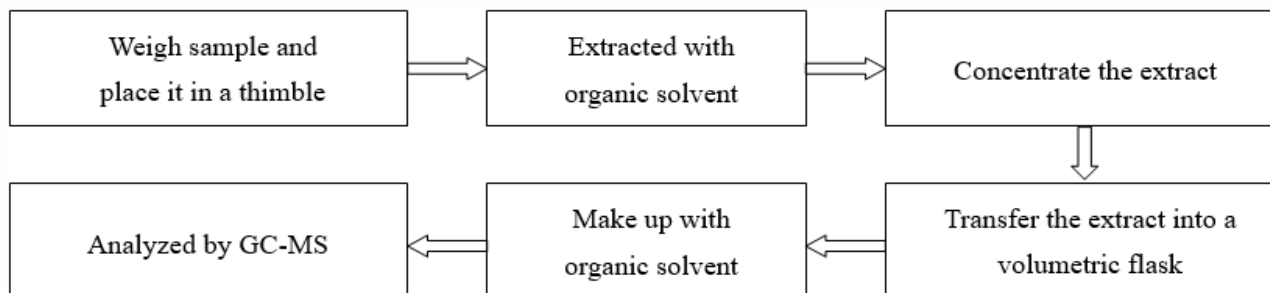
Report No. A22204388871010201

Page 6 of 7

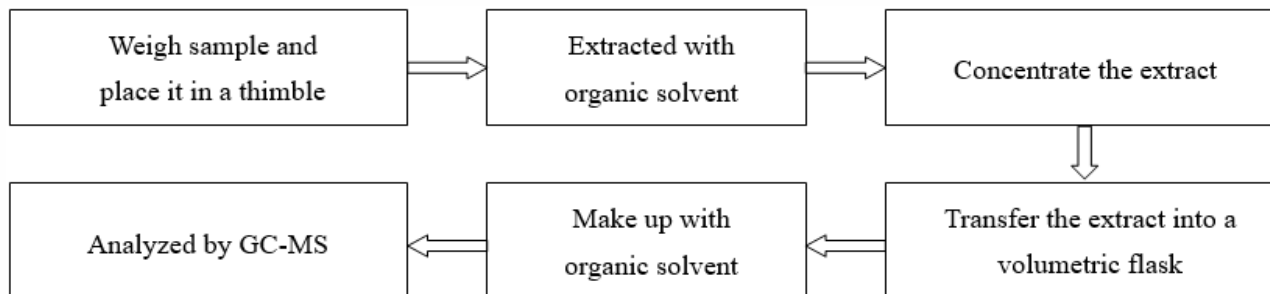
3. Hexavalent Chromium (Cr(VI))



4. Polybrominated Biphenyls (PBBs), Polybrominated Diphenyl Ethers (PBDEs)



5. Phthalates (DBP, BBP, DEHP, DIBP)



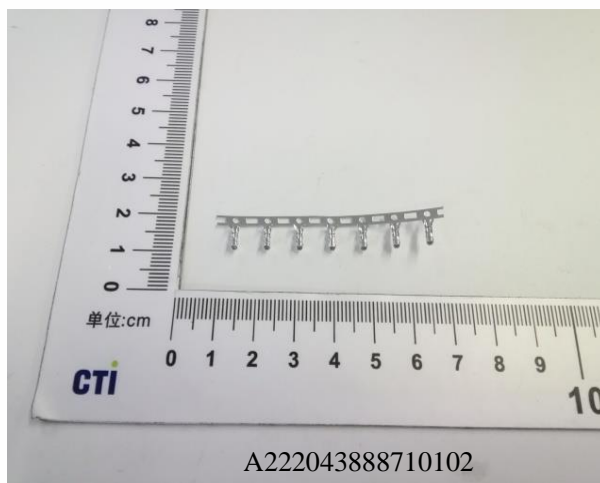
Test Report

Report No. A22204388871010201

Page 7 of 7

Photo(s) of the sample(s)

001-002



Statement:

1. This report is considered invalid without approved signature, special seal and the seal on the perforation;
2. The Company Name shown on Report and Address, the sample(s) and sample information was/were provided by the applicant who should be responsible for the authenticity which CTI hasn't verified;
3. The result(s) shown in this report refer(s) only to the sample(s) tested;
4. Without written approval of CTI, this report can't be reproduced except in full;
5. In case of any discrepancy between the English version and Chinese version of the testing reports (if generated), the Chinese version shall prevail.

*** End of Report ***

Appendix

Client Reference Information

TJC0501、TJC1002、TJC1003、TJC1004、TJC1006、TJC1007、TJC1008、TJC1501、ZH、PH、SAN、SANW (JC20)、SCN、SCNW (JC25)、TJC15 (SH)、TJC19、TJC2004、VH、TJC1、TJC2、TJC3、TJC4、EH、EI、JL、LP、M63、EL、MR、SM、TJC9、TJC2508、TJC14、TJC25、TJC31、TJC2503、TJC2509、TJC2510、TJC2511、TJC25415、TJC8、TJC21、TJC3001、SDN、TJC6、TJC3965、TJC3966、VH、WH (CH43)、CZ34、CH34、TJC4501、TJC6201、TJC52、TJC27、TJC2512、250 (CH198)、TJC28、TJC5007、FL、TJC1256、TJC59、TJC0508、TJC20041、GDJK10001、GDJK04001、TJC12510、TJC0402、TJC10010、TJC10012、TJC3969、TJC20033、TJC1009、TJC1255、CH99、CH206、TJC25456、TJC25014、CH209、TJC6202、CH211、TJC41、CZ367、TJC2B、TJC10、L6.2、CH218、CH219、CH161、CH160、TJC25460、TJC25028、CH243、CH251、CH218B、CH219B、TJC25416、TJC20010、CZ126、TJC12、PHD、TJC80001、TJC1507、TJC79203、TJC25035、TJC12512、TJC10020、IL-Z、RY04、RY05、IL-FPC、TJC35006、CH301、TJC25040、TJC12515、TJC1255、TJC25472、CH295、CH296、CH298、CH301、CH285、TT6.0、TJC20055、TJC50013、CZ39、CH34、TJC80001、TJC25041、CZ572、TJC86001、TJC25476、TJC25477、TJC39615、TJC64001、TJC25475、TJC20064、TJC25046、TJC92001、TJC25058、TJC10025、3002、FN10C、3014、TJC20070、C30502、2405、TJC20078、TJC12517、TJC20074、TJC12519、TJC50022、TJC25064、TJC25065、TJC50016、TJC20080、TJC58401、TJC20081、CH448、CH449、CH58、CH168、1506、TJC33001、TJC20082、TPC001、TPC002、TPC003、TJC6203、TJC15014、PH-nYI、TJC2509C、TJC25066、TJC50023、TJC20084、TJC39620、TJC4001、TJC79205

Statement:

1. The Appendix Information was/were provided by the applicant who should be responsible for the authenticity which CTI hasn't verified.
2. The Appendix Information is/are the supplement(s) for the Report A22204388871010201.